

SUNSYNC® DRIVE XT

DARK EVERYWHERE YOU NEED IT.
CLEAR EVERYWHERE YOU DON'T.

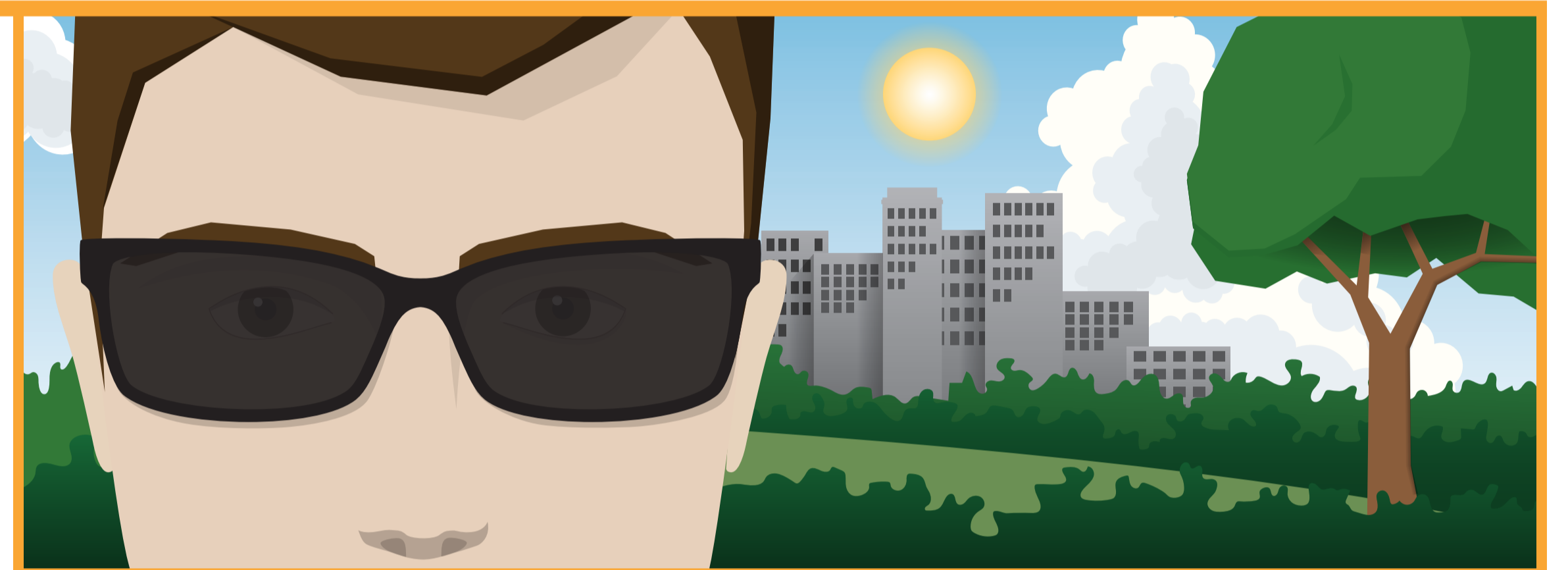
Whether at home, in the office, or behind the wheel, SunSync Drive XT reacts to your environment, changing from clear to dark and back again.*



AT HOME.



Stay clear, even in a brightly lit house.



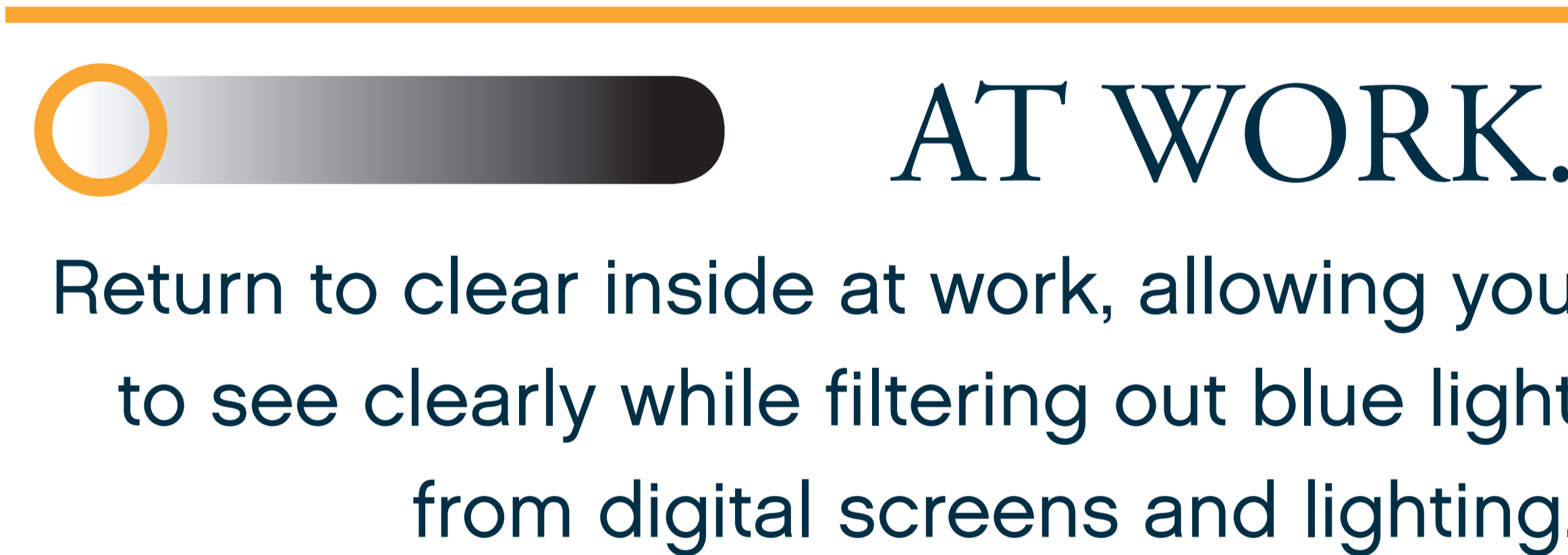
OUTSIDE.

Begin to darken as soon as you step outside, shielding your eyes from harsh glare, blue light, and UV rays from the sun.



IN THE CAR.

Stay dark in the car for comfortable vision behind the wheel.



AT WORK.

Return to clear inside at work, allowing you to see clearly while filtering out blue light from digital screens and lighting.



AT NIGHT.

Remain clear at night, for precise vision on the road, at home, or around town.

Ask your eye doctor for SunSync Drive XT during your next exam.

sunsync®

LIGHT-REACTIVE LENSES

* Photochromic performance is influenced by temperature, UV exposure, and lens material.

©2018 Vision Service Plan. All rights reserved.
SunSync is a registered trademark of Plexus Optix, Inc.
All other brands or marks are the property of their respective owners. 24312